




APRISE

ALTERNATIVE PROTEIN RESEARCH & INNOVATION SKILLS ENHANCEMENT

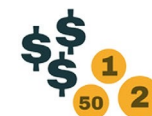


Empowering research talents
in alternative proteins across
Europe's widening countries.

Prof. Dr. Mecit Halil Öztop

Middle East Technical University

APRISE Coordinator



03

What is APRISE?

04

Why is APRISE Needed?

05

What Does APRISE Do?

06

Structure of APRISE

07

Who is Involved?

08

What Will APRISE Achieve?

09

How to Join APRISE

WHAT IS APRISE

➔ **APRISE is a Horizon Europe ERA Talents project designed to strengthen research and innovation (R&I) capacity on alternative proteins in widening countries through hands-on training, cross-sectoral mobility, and stakeholder collaboration.**



"Empowering research talents in alternative proteins across Europe's widening countries. "



Our Mission

To equip widening country researchers and institutions with the skills, experience, and networks needed to drive the sustainable protein transition.



Our Vision

A Europe where innovation in alternative proteins is inclusive, connected, and equally accessible regardless of geography or sector.

Our Goals

- ✿ Support talent mobility across sectors and borders
- ✿ Deliver multidisciplinary training in science, entrepreneurship, and communication
- ✿ Promote open science, gender balance, and inclusiveness in all activities
- ✿ Integrate alternative protein innovations into local and regional food systems
- ✿ Engage stakeholders, citizens, and policymakers in shaping the protein transition
- ✿ Enhance research management and institutional capacities

WHY IS APRISE NEEDED?

APRISE is a Horizon Europe ERA Talents project designed to strengthen research and innovation (R&I) capacity on alternative proteins (APros) in widening countries through hands-on training, cross-sectoral mobility, and stakeholder collaboration.



PROTEIN CRISIS

Global demand for protein is rising while traditional systems remain unsustainable.¹



REGIONAL GAPS

Widening countries face limited Access to infrastructure, funding, and innovation networks.



TALENT DRAIN

Skilled researchers often leave due to lack of career opportunities and support.



DISCONNECTED ACTORS

Academia, industry, and civil society rarely collaborate effectively in the alternative protein field.

Why are APros Needed?

APros reduce resource use and greenhouse gas emissions^{2,3}

EU countries invested heavily in 2024:

- €38M by Germany⁴
- €60M by the Netherlands⁵
- €168M by Denmark⁵
- €65M by France⁵
- €7M by Spain⁶

Why Widening Countries?

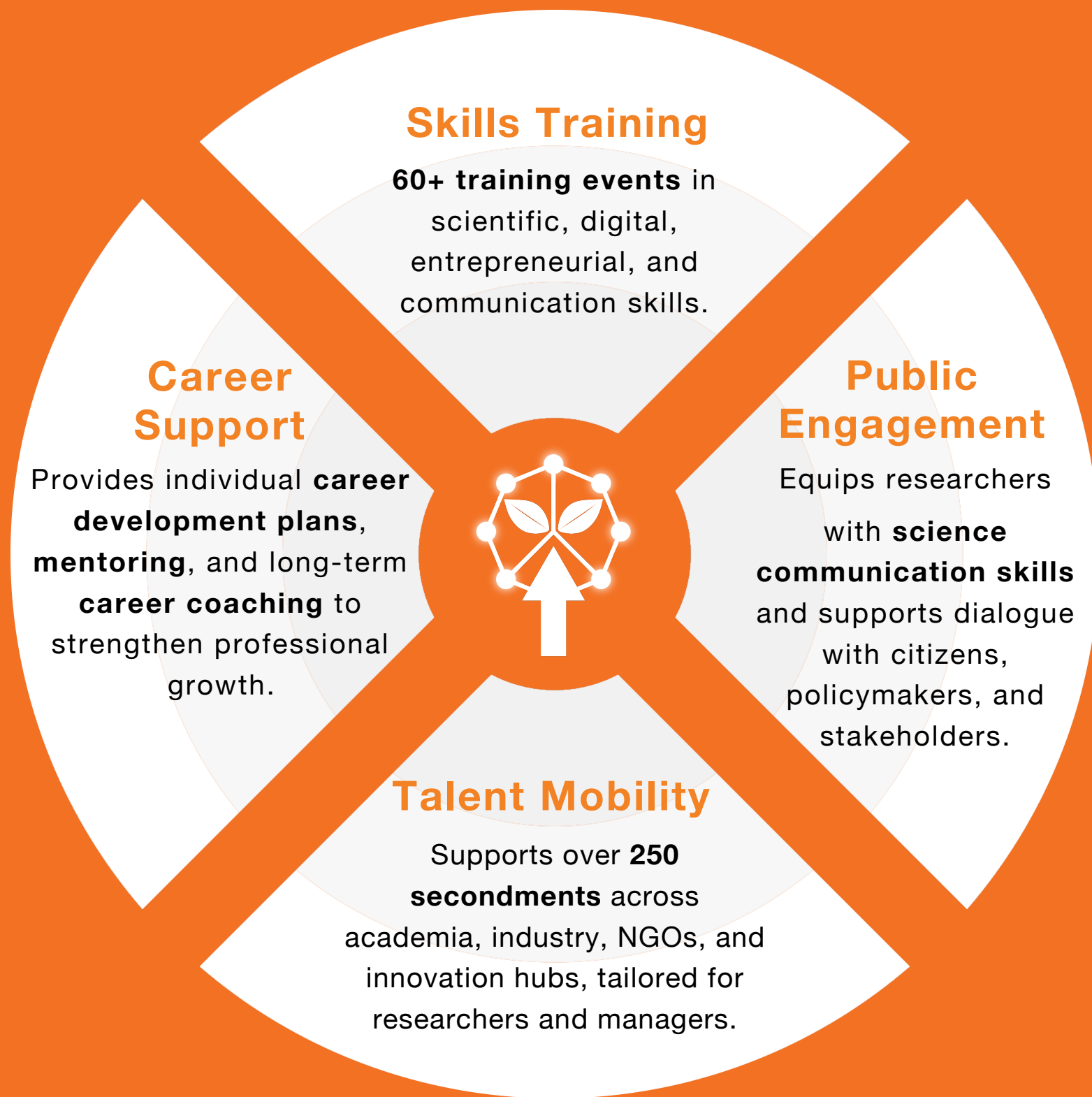
- Rich biodiversity and favorable agricultural conditions.
- Still underrepresented in APros research due to:
 - Limited infrastructure
 - Regulatory gaps
 - High production costs
- Huge untapped potential for sustainable food innovation

¹IPCC, 2023, <https://www.ipcc.ch/report/ar6/syr/>

²Good Food Institute, <https://gfi.org/resource/environmental-impacts-of-alternative-proteins/>

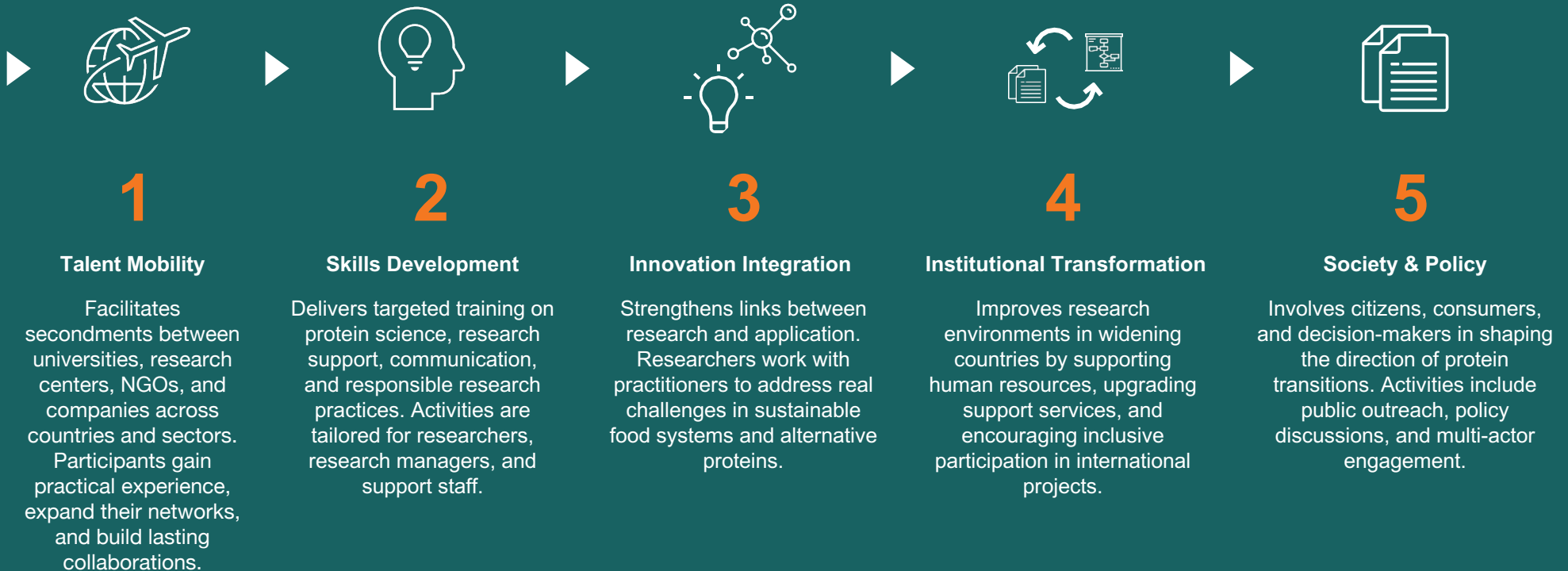
³<https://doi.org/10.1038/s41538-024-00291-w>
⁴<https://gfi.europa.org/blog/federal-budget-2024-germany-invests-38-million-euros-in-the-protein-transition-and-sets-out-to-become-a-leader-in-the-field/>

⁵https://www.europarl.europa.eu/RegData/etudes/BBIE/2023/751426/BBIE_2023751426_EN.pdf
⁶<https://www.foodnavigator.com/Article/2023/11/20/german-government-to-boost-alternative-proteins-with-38m-investment>



STRUCTURE OF APRISE

Led by Middle East Technical University Food Engineering Department (Türkiye), APRISE is structured around five core pillars:



Who is Involved?

APRISE brings together a diverse consortium of **18 partners** from **11 countries**, combining academic excellence with practical expertise across the alternative protein landscape.



11 Widening



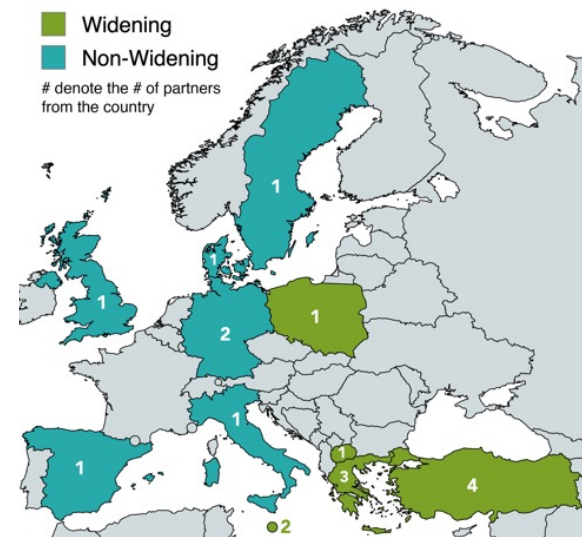
7 Non-Widening



5 Academic



13 Non-Academic



Middle East Technical University
Türkiye



MyBiotech GmbH
Germany



Nutri Biotech Services Ltd.
Malta



EcoVibes - Environmental Consultants
Greece



Nordic Horizon Institute
Sweden



OpenCom Italy
Italy



Warsaw University of Life Sciences
Poland



Agricultural University of Athens
Greece



Advanced Climate Risk Education
Germany



Nottingham Trent University
UK



Telewander ApS
Denmark



Institute of Agrifood Research and Technology
Spain



BKEA Ltd
Malta



BITKIDEN
Türkiye



Green Growth Platform
Republic of Macedonia



Theta Biomarkers
Greece



Technology Development Foundation of Turkey
Türkiye



Sutas Dairy Company
Türkiye

What Will We Achieve?

Stronger Talent, Stronger Systems

We will support the growth of over 250 individuals through training, mentoring, and secondments.

Better Research Skills

Researchers and staff will gain new capacities in scientific methods, project management, communication, and open science.

More Connected Institutions

Widening country organizations will form long-term links with experienced partners across Europe.

A More Inclusive Food Future

Alternative protein research will better reflect regional needs, social values, and cultural contexts through public engagement and policy dialogue.

Practical Tools and Outputs

Open-access training materials, institutional development plans, and mobility frameworks that others can reuse and adapt.

How to Join?

Are you a researcher or research manager based in a widening country?

You can apply for upcoming **secondments**, **trainings**, and **mentoring calls**. We offer opportunities tailored to both academic and non-academic profiles.

Stay Updated

Follow us on **LinkedIn**

Sign up for our **mailing list** to receive open calls and updates



/apriseproject



aprise@metu.edu.tr

CONTACT



Prof. Dr. Mecit Halil Öztop
Middle East Technical University
Main Proposer of the Action



mecit@metu.edu.tr



aprise@metu.edu.tr



[/apriseproject](https://www.linkedin.com/company/apriseproject)